

Generator®

G
E
N
E
R
A
T
O
R

Waring Taylor

FLEXIBLE
WORKSPACES

MEETING AND
EVENT SPACES

Welcome to 30 Waring Taylor

Located on Waring Taylor Street, where the Lambton Quay shopping district meets the parliamentary precinct, 30 Waring Taylor Street is an iconic art deco building that has thoughtfully been redeveloped.

Inside, Generator provides everything you need to make a home for your business. We offer flexible, fully serviced workspace designed for modern ways of working.

You'll be looked after by a team of business and hospitality professionals who'll make sure you have everything you need to power productivity and keep your people happy at work, from tea and snacks to IT support to bespoke networking events.

And you'll join a readymade business community that brings opportunities and inspiration your way.



It's all taken care
of at Generator.



**FLEXIBLE
WORKSPACES**



**MEETING AND
EVENT SPACES**



Location

Waring Taylor

30 Waring Taylor Street, Wellington

+64 (04) 478 1600



**FLEXIBLE
WORKSPACES**



**MEETING AND
EVENT SPACES**

Premium Design and Amenity



Fully refurbished to 100%
National Building Standard (IL2)



Members Lounge and Bar



Secure biking parking
with power for e-bikes



Exceptional fitouts
Support members to attract and retain talent



Showers and towel service



5 Green Star rating



Views over Midland Park



Event spaces with the latest AV



Onsite concierge, IT support
and event management team



2021 NZ Property Council
Commercial Property of the Year



Multiple breakout spaces



Dog friendly

Known as the Dunbar Sloane building in a previous life, a lot of effort has been taken to retain the rich 1920s character and eclectic charm of the building, whilst injecting the latest design features to support modern ways of working.

The redevelopment brings the building up to 100% of NBS, including the construction of new concrete sheer walls, new piled foundations and structural steel diaphragm strengthening.

The three levels of workspace are a mix of private offices in a variety of sizes, shared and breakout workspaces alongside member amenity such as kitchens, showers and end of trip facilities.

The members bar and lounge sits in the basement and provides a central place for members to connect, relax and entertain, or as an alternative location for work or meetings.

Amenities

- Collab / Pod
- Meeting & Events
- Breakout & Social
- End of Trip Facilities
- Bathrooms / Showers

Ground Floor Entry & Host, Event & Meeting Rooms



WARING TAYLOR STREET

MAGINNITY STREET

Basement Members Bar, Lounge & Event Space



WARING TAYLOR STREET

MAGINNITY STREET

Level 1 Shared Working, Private Offices, Kitchen & Breakout



WARING TAYLOR STREET

MAGINNITY STREET

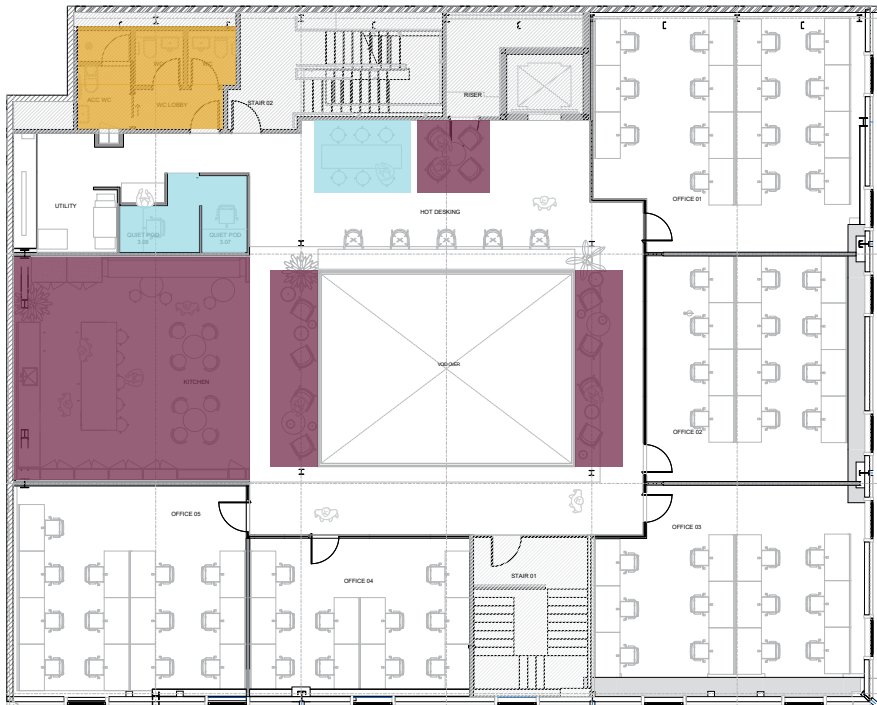
Level 2 Shared Working, Hot Desking & Private Offices



WARING TAYLOR STREET

MAGINNITY STREET

Level 3 Hot Desking, Private Offices, Kitchen & Breakout



WARING TAYLOR STREET

MAGINNITY STREET



Community

At Generator, we've been successfully building culture and community with our members for twelve years, so we know what it takes to make a flexible workspace buzz.

We know just how important feeling connected to your workplace is - when everyone feels like they're part of something bigger, it's not just easier to attract and retain talent - productivity goes up.

We have a chock-a-block calendar full of legendary community events across our five sites. There's plenty of opportunities to get social with your work neighbours and build valuable business connections, whether its competing in a quiz night or keeping the body and mind energised with yoga and bootcamps.



Meeting & Events

The meeting and event spaces at 30 Waring Taylor Street offer character cool in the capital's best location.

With a range of spaces from 4-person meeting rooms to large event spaces suitable to over 100 people, these cutting-edge spaces are perfect for everything from workshops to cocktail events. Equipped with the latest tech designed to support hybrid meetings, all with onsite technical assistance at the ready.

Meeting room credits are included in your membership for booking these or spaces at any of our Generator sites.



**FLEXIBLE
WORKSPACES**

**MEETING AND
EVENT SPACES**

Benefits



Unplug Capex

Let us manage your fit out, from tiles to teaspoons, avoiding the need for capital outlay and additional liability to further unplug the risk from your business. The furniture is all included as is the cabling and IT infrastructure so you can just move in and get started.



Best In Tech

We pride ourselves on delivering the best in class internet access and AV capability that will support even the most grunty users. We provide gigabit hardwired LAN and AC Wave2 Wi-Fi, and fully support the network to your device with specialist in-house support. All sites are backed by dedicated 10 gigabit fibre links to enable your most demanding cloud workload.

Our meeting rooms are fully equipped for BYOD video conferencing, with onsite technical assistance at the ready. Your access card (or individually coded dual factor RFID access card to be specific!) will be set up from day one. With an after hours helpdesk, security cameras on all doors and common spaces plus 24/7 security monitoring services, you can have peace of mind when you switch off for the day. No need to shoulder the cost and associated upkeep of your own print solution, we fully manage your access to the Generator print system, from setup of the printer and drivers along with Papercut tracking software, through to any issues you may experience using the network print server and Xerox printers.



Supporting your team culture

At Generator, we've been successfully building culture and engaging communities with our members for over ten years, so we know what it takes to make a shared workspace buzz. Our community team facilitate a calendar of monthly activations and events at sites that are welcoming and enclusive to all.

Our team will work with your business to understand how we can support your culture through events or engagement opportunities, identifying opportunities that align with and celebrate your values. We can also deliver resources to support businesses that are going through a transition or new ways of working.



Spaces

Our exceptional fitouts support members to attract and retain talent. Beyond your own office each site has beautiful breakout spaces and a cafe and bar, lounge to relax, network and meet in alongside an array of event spaces with the latest AV and onsite support.



Multi-city access + Extra amenity

Members benefit from access to all Generator sites (three in Auckland and two in Wellington) and 2 stand alone meeting and event suite sites in the Commercial Bay precinct. The systems are all the same creating a seamless experience between cities. Use sites as overflow or project workspace, for meeting rooms or to host larger scale events and to join in with community events and activations. Generator members also benefit from a partnership with Hub, Australia's leading flexible space provider to receive complimentary access to their sites across Australia.



Highly agile and flexible

Our Managed Suite solutions offer short term membership agreements versus long term lease liabilities to provide comfort to your balance sheet as well as your ability to react to changes in your business.



Unplugging OPEX

All operating costs of running the building are included in the monthly membership fee.



Tailored membership

We understand change, and can work with you to tailor membership packages to suit.



Concierge

Our member concierge can take care of (almost) all your requests. Need someone to book meeting rooms or your next event, organise coffee or manage dry cleaning? You know who to ask.

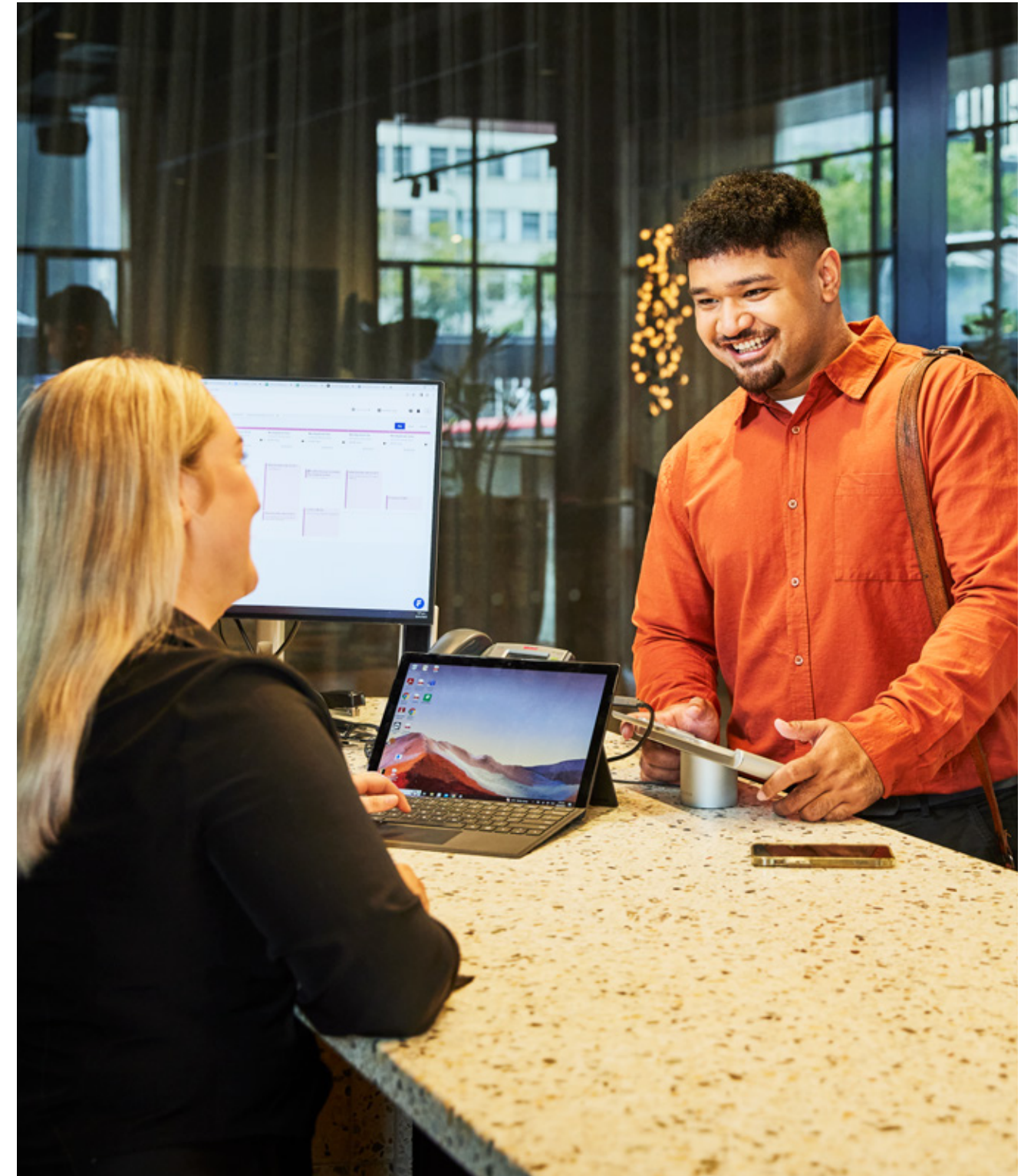
Why Generator

At Generator, we know business and what it takes to power one. You and your team can simply plug in and go, while we take care of the rest.

All the costly, time-consuming things like reception, basic admin services, tech servicing and support, cleaning and consumables, security, printer leasing and power is all wrapped up in one monthly bill.

With over 2000 members, Generator attracts a cross-section of the New Zealand economy from corporates, global enterprise clients to boutique consulting firms – and the mix is expanding all the time.

We have been owned by NZX Listed Precinct Properties since 2019, a partnership that ensures we are at the forefront of New Zealand's evolving office space market and gives our members access to tailored and flexible options across both businesses' portfolios.



Find out more on
generatornz.com/locations/wellington

Enquire at
wellington@generatornz.com

Visit one of our spaces

Waring Taylor

30 Waring Taylor, Wellington CBD
+64 (04) 478 1600

Bowen Campus

40 Bowen Street, Wellington CBD
+64 (04) 471 2068

Britomart Place

11 Britomart Place, Britomart, Auckland
+64 (09) 601 8905

Stanbeth & Excelsior

28 Customs St East, Britomart, Auckland
+64 (09) 551 2148

12 Madden Street @ GridAKL

12 Madden Street, Wynyard Quarter, Auckland
+64 (09) 601 8900